



MISSOURI RURAL CRISIS CENTER

1108 Rangeline St. • Columbia, MO 65201 • [573] 449-1336 • FAX: [573] 442-5716

2014 End-of-Year Update

In 2014, thousands of MRCC members took action on issues that really matter to farmers, rural communities, consumers and the environment. MRCC members bring a farm & rural voice and farm & rural values to the debate on issues impacting our families and communities. Our members continually motivate us with impressive victories throughout the year and repeatedly answer the calls to action that truly make a difference!

MRCC Leads in Fight Against “Right to Farm”

On Tuesday, August 4th, half a million Missourians agreed with MRCC—that the “Right to Farm” constitutional amendment is a horrible idea that supports corporate interests at the expense of family farms, the environment and democracy. This was an incredible campaign, in which tens of thousands of Missourians engaged to challenge the corporate, industrial vision of the future of agriculture in Missouri (against big odds and stacks of corporate money).



The vote count was 499,963 to 497,588—a margin of 2,375 votes—so, we lost by less than ¼ of 1 percent. But, in some very important ways, this is a major success story. We clearly demonstrated our capacity to get out our “family farms vs. corporate control” message statewide and have a huge impact on a statewide election.

A Quick History: In 2012, corporate agri-business and their front groups went to North Dakota and passed a pro-corporate constitutional amendment that protects “agricultural technology” and “modern livestock production” with little opposition.

And in 2013, they came to the Missouri legislature with the expectation to put the same language in OUR constitution. But MRCC engaged thousands of Missourians in the legislative process to oppose this blatantly pro-corporate language—and we got the “agricultural technology” and “modern livestock production” language taken out and a specific sentence added to protect local control. A substantial victory, but the bill passed and was subsequently put on the

See “So-Called...” Continued on Page 3

Beef Industry Lobby Groups Attempt to Get More Taxes from Cattle Farmers

MRCC Farmer and Consumer Members Push Back

The Beef Checkoff is a \$1 tax on every head of cattle sold. The money is *supposed* to support the promotion and research of beef. Missouri cattle farmers pay over \$2 million every year into this federal program.

Now, the National Cattlemen’s Beef Association (NCBA) wants to increase the checkoff tax from \$1 to \$2-\$3 per head, and the Missouri Cattlemen’s Association (MCA) is lobbying for a \$.50 (or more) per head brand new state beef checkoff tax. This is an unpopular, unaccountable use of farmers’ hard-earned money. And, it’s bad for all of us who care about family farms, good food and the democratic process.

The same organizations that are lobbying for this new money also lobby for things like: getting rid of our Country of Origin Labeling (COOL), doing away with local county control, allowing foreign corporations to own

***STOP THE BEEF
TAX!***



MRCC members with allies from across the country gather to discuss concentration of agriculture and serve up sustainable alternatives that benefit all of us—farmers, consumers and our economy. That’s what MRCC does—brings diverse people together to address challenges and create practical and viable on-the-ground solutions.

See “Beef Tax” Continued on Page 3

Fast Track, Free Trade Agreements Bad for Farmers, Consumers, Democracy

In July, MRCC farmer members & staff traveled to Washington D.C. to meet with allies and MO Congresspeople to discuss Fast-track and the Trans-Pacific Partnership (TPP). Members met with Reps. Vicky Hartzler & Billy Long, & staff from Rep. Sam Graves', Ann Wagner's & Senator Claire McCaskill's offices.

Our message was clear: These trade deals take power away from state & local elected reps & subject us to an undemocratic, corporate global constitution that would override both U.S. and state constitutions; the TPP clears the way for agribusiness corporations to sue nations, states and

local governments for enforcing food safety and environmental standards as "illegal trade barriers." Taxpayer money would be used to pay any fines or settlements resulting from this litigation; and the TPP would undermine U.S. family farmers and consumers by

nullifying protections like Country of Origin Labeling (COOL) to benefit huge corporate agribusiness interests.

Jim Compton, MRCC board member & farmer from

Buffalo, wrote an op-ed that ran in the *Springfield News Leader*. We couldn't have said it better, here's an excerpt:

"The Trans Pacific Partnership (TPP) is being widely described as 'NAFTA on steroids'. This new trade regime involves 11 nations (mostly in Asia) & has been negotiated entirely in secret. Citizens and most lawmakers have been locked out of the negotiation process and kept in the dark about the details of this proposed agreement.

Now, the Obama administration is pushing hard for "fast-track" trade authority. This gives the President power to make trade deals without consulting Congress & undermining the normal democratic processes where our elected representatives can offer amendments and changes.

Missourians value local democracy, and the people of this state have fought hard to maintain the right of local control. Fast track and the TPP are a direct attack on Missouri values.

This type of trade agreement dramatically increases the profits of huge agribusiness corporations at the expense of U.S. farmers, rural economies & consumers."

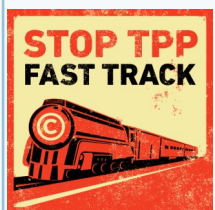


MRCC and Allies Meet in D.C. to talk about how current "free trade" affects family farms.

"Missourians value local democracy, and the people of this state have fought hard to maintain the right of local control. Fast track and the TPP are a direct attack on Missouri values."



MRCC farmer members, Darvin Bentlage & Joe Hardy, and staff, Tim Gibbons, visit Congresspeople in Washington D.C.



Patchwork Family Farms

From Farm to the Columbia Food Truck Scene

As demand for local food increases, another new trend in food service has emerged on Columbia's streets and parking lots. Food trucks are rising in popularity because of their mobility, quick service and unique food. Two such trucks are riding the food truck wave and using *Patchwork Family Farms* on their menus. *Pepe's Taco Truck* serves Mexican food with tacos, burritos and much more.

Pepe was the first food truck in Columbia and has a large following on Facebook and Twitter that ensures wherever he goes, hungry people will follow. The Patchwork staff love getting Pepe's tacos and tamales for lunch knowing he supports local Missouri food and farmers.

Ozark Mountain Biscuit Company serves up Southern comfort food, and the results are delicious. They have created a loyal following and travel to music festivals around the country. Their made-from-scratch cooking means everything is fresh, from the fried pies (Brant's favorite!) to the Patchwork sausage gravy.

"I like Patchwork because I know I can get high quality pork that has good flavor and is grown locally. Knowing that my pork is raised and produced locally means I can connect with like-minded folks that value local agriculture, says Bryan Maness, owner of Ozark Mt. Biscuit Co.

If you're in Columbia & need a quick bite for lunch, dinner or late night, check out Pepe's & Ozark Biscuit Co.!



Pepe's Taco Truck serves great tacos with Patchwork Family farms pork!



Patchwork Family Farms and Ozark Mountain Biscuit Co., sittin' in a tree...

“Beef Tax” cont. from page 1

Missouri farmland and opposing enforcement of anti-trust laws. And, they supported the *so-called* “Right to Farm” constitutional amendment. In short, these commodity groups, funded with farmers’ dollars, support policies that promote the vertical integration and corporate control of the livestock industry at the expense of independent family farms, rural economies and consumer choice.

In the 2014 legislative session, a bill was proposed to allow the state beef board to increase the state’s beef checkoff tax.

MRCC engaged literally hundreds of beef producers to call their legislators & the Governor in opposition. As a result, they did not have the support to pass the beef checkoff as a stand-alone bill & had to amend it to an omnibus bill that passed in the last two days of the session.

Fortunately, Governor Nixon vetoed the bill. Then, corporate agri-business and their shiny-shoed lobbyists attempted to override the Governor’s veto, but we were able to defeat that attempt.

But, in 2015, this proposal is coming back, and the Governor will have serious pressure from corporate ag to

sign the bill. And the USDA has just proposed a second beef checkoff program that producers will be expected to fund. Let’s say no to this agri-business supported tax—***Support Family Farms, Not Corporate Farms & Multi-National Meatpackers.***



“In short, these commodity groups, funded with farmers’ dollars, support policies that promote the vertical integration and corporate control of the livestock industry at the expense of independent family farms, rural economies and consumer choice.”

“So-Called Right to Farm” cont. from page 1

August 2014 ballot.

What We Were Up Against: Our opposition had access to unlimited amounts of money. The lead group supporting Amendment 1 was *Missouri Farmers Care*, a front group for corporate agri-business whose members include Monsanto and Cargill, the Missouri Pork Association, the Missouri Cattlemen’s Association and Lathrop & Gage (a law firm for Chinese-owned Smithfield Foods). Numerous politicians, including two statewide office holders (Attorney General Chris Koster and Secretary of State Jason Kander) campaigned in support of the so-called Right to Farm. These factors plus a poll showing that 69% of Missourians would vote “Yes” and only 13% would vote “No” demonstrated the need for an honest grassroots campaign.

Our Campaign: MRCC & campaign partners, *Missouri Food for America* and *Missouri Farmers Union*, organized a strategic and intensive statewide, grassroots campaign.

We highlighted the issues of democracy (corporations taking over our state constitution and bypassing our democratic process); industrial corporate-control of food vs. independent family farm agriculture; and foreign corporations owning Missouri farmland (e.g. Smithfield Foods owned by a multi-national Chinese corporation).

In just 6 weeks, MRCC communicated our message directly to over 25,000 Missourians and engaged our long-time allies in the food, environment and labor communities to help us engage another 60,000. (A special thank you to *MO Jobs with Justice* and *Food & Water Watch* for demonstrating your support for MRCC and Missouri’s family farms early and often in this campaign.)

We generated significant media coverage including over

Our Message—Amendment 1:

- ✓ Amendment 1 will protect huge corporate factory farms from any accountability at the expense of farmers & rural communities.
- ✓ Amendment 1 could give foreign corporations the right to own Missouri farmland without limits.
- ✓ Amendment 1 would deny due process and the right of farmers and landowners to defend their property rights against corporate agribusiness.
- ✓ Amendment 1 would create unforeseen consequences and provide protection for corporate agribusiness to do virtually whatever they want, however they want and wherever they want.
- ✓ Missouri farmers already have the right to farm. Amendment 1 is an unnecessary corporate takeover of our state constitution that forever guarantees the rights of corporations to write their own rules and bypass democracy and local control.

110 news stories, LTEs, Op-Eds, blogs, radio and TV. And at least 15 Missouri newspapers came out against Amendment 1 including, the *Joplin Globe*, *Springfield News-Leader*, *West Plains Daily Quill*, *Jefferson City News Tribune* and *STL Post Dispatch*.

In a six week period of time we closed a 49 point deficit. And this was not a rural vs. urban issue—56% of Missourians who voted “No” were from rural counties.

With well over \$1.5 million spent on the “vote yes” campaign, this amazingly close vote was an incredible feat by MRCC and our allies. **We have demonstrated that it is possible to lead effective statewide farm and food campaigns that enable us to build a powerful force for our future work to promote family farms and to hold corporations and government accountable to all Missourians.**

Columbia Career Center Culinary Students Learn with Patchwork Family Farms Pork

The Columbia Area Career Center (CACC) Culinary Arts Program trains 200 Mid-Missouri students every year to become chefs and food aficionados.

In the 2013-14 season, CACC bought over 1,700 pounds of *Patchwork Family Farms* pork for its program, which is used to make items such as smoked andouille and tasso ham. Patchwork is one of many local food producers from which students, under the tutelage of Brook Harlan and other chef instructors, use local produce and meat in their culinary preparations.

“Showing the students the importance of using local food to create healthy sustainable meals helps get them



Chef Harlan and CACC students stuff Andouille sausage with Patchwork Family Farms pork.

on the right track when they are the chefs making decisions in restaurants in the future,” says Chef Harlan.

CACC students also have the opportunity to participate in the Skills-USA Culinary Arts competition every year and the winners go on to compete at Nationals held in Kansas City, MO. This year, CACC students placed 1st in culinary and 2nd in baking at Nationals and received scholarships for advanced

training.

The dedicated teachers at CACC provide support for students to attend these competitions through fundraising lunches and by selling many delicious products (created by the students) that can be purchased directly at the CACC kitchen at the Columbia Career Center. For more information visit www.cacc Culinary.blogspot.com.

MRCC Testifies at Department of Justice Against Tyson-Hillshire Merger

MRCC, with Food and Water Watch and National Farmers Union, testified in front of the anti-trust division of the Department of Justice (DOJ) in Washington D.C. in opposition to the Tyson-Hillshire merger because of its increasing monopolistic control of the livestock industry.

“The livestock industry is already too consolidated,” said Tim Gibbons, MRCC. “The DOJ should reject this proposal and reject any merger that allows corporations to exert unfair market power over independent family farmers, rural communities and consumers.”

“Consolidation gives the biggest firms more bargaining power over the farms they buy from and can have a significant impact on farmers’ access to markets,” said Patrick Woodall, from Food & Water Watch. “As market concentration has increased, the real price farmers receive for their hogs has declined.”

While the Tyson-Hillshire merger was eventually approved, opposition by MRCC and our allies forced DOJ to demand that Tyson divest their sow-buying division as part of the merger. This was a significant move by DOJ that would not have happened without people speaking out.

**STOP THE
MERGERS!
ENFORCE
ANTI-TRUST
LAWS!**

David vs. Goliath: Farmers & Rural Citizens Fight an Iowa-based Factory Farm Targeting Callaway County

On Wednesday, Nov. 5th, MRCC held a press conference to highlight the many reasons why DNR should deny a proposed permit by a large out-of-state CAFO trying to locate in Callaway County.

Callaway County farmers & citizens are fighting this 10,000 head sow operation from coming into their community. Iowa-based Eichelberger Farms, Inc. is co-owner of Triumph Foods, Inc., the second largest hog producer in the U.S.

Citizens have organized substantial opposition to this proposal. “We’ve really come together as a community,” said Margot McMillen, Callaway farmer and MRCC Board Member. “Family farmers and landowners in Callaway County have spent decades and even generations protecting the land, water and natural resources in our county, and now an unaccountable out-of-state company is trying to put 10,000 sows on 20 acres, jeopardizing our property rights future.”

A prime example of what CAFOs bring—on October 20th, a Callaway County farmer discovered a spill of 10,000 gallons of hog manure from an existing Cargill CAFO that sits near the proposed 10,000 head CAFO site. The manure ran across landowners’ properties and flooded into Millers Creek, which drains into Cedar Creek & Mark Twain National Forest.

On November 6th, over 175 people crowded into Hatton/McCredie School gym to express their concerns about water quality & the ability of DNR to protect their property rights at a DNR hearing.

Twenty-nine new CAFO permit applications have been filed in the last year, and more are coming. All rural counties are at risk. So, now is the time to join MRCC and other farmers and landowners in calling for the protection of our property rights, our water and the future of agriculture in Missouri.



MRCC Board Member and Callaway County Farmer, Margot McMillen, speaks at a DNR hearing on a proposed 10,000 head CAFO.



Media turns out for “Stop Factory Farms” press conference at MRCC office.

Patchwork Family Farms, MRCC Head to Farm Aid in Raleigh, North Carolina

On Wednesday, September 10th, 20 MRCC members began the long haul down to the great state of North Carolina to participate in the events surrounding Farm Aid 2014 in Raleigh.

Standing Up for Social Justice: On Thursday, MRCC leaders participated in an event bringing together farmers and farm organizations from all over the country. *Looking Back and Moving Forward, Together*, featured family farm and civil rights leaders, including Reverend William J. Barber II, one of the founders of North Carolina's Moral Mondays.

Barber pointed out that "the same people that often pass the policies that support big agribusiness over family farmers are the same people that are voting against public education and health care and living wages and environmental protection and voting suppression."

Sharing Farm Practices & Successes: Friday morning MRCC farmers participated in a working tour of *Operation Spring Plant* led by Dorathy and Phillip Barker who own and manage one of the only African American dairy operations in N.C. This farm offers real agricultural solutions to combat corporate concentration in the dairy and vegetable industries. The tour also highlighted the history of their long-standing produce

aggregation facility and an innovated on-farm biodiesel production project, and explored the plight of black land loss and black farmers in the south.

"This was the most educational and enlightening Farm Aid trip ever," said Walker Claridge, farmer from Hatton, MO. "The meeting on Thursday and the farm tour really brought home the mission of Farm Aid and MRCC—Social and economic justice for farmers and consumers."

Patchwork Sells Thousands of Missouri-Made Pork Sandwiches at Farm Aid Concert:

Saturday morning, MRCC members attended the Farm Aid pre-concert press conference with Willie Nelson, Neil Young, John Mellencamp and Dave Matthews. Neil Young, once again, conveyed the issues facing family farms under the current corporate controlled agricultural system.

"We love doing Farm Aid, but we don't love that we're doing Farm Aid," Young said about himself, Willie, John and Dave. "This isn't a celebration; it's a mission."

During the concert, two Patchwork Family Farm booths sold over 4,200 sandwiches—pork chops, ham steaks

and brats—and talked to thousands of consumers about the difference between corporate, factory farm pork and pork raised sustainably by independent family farmers. Patchwork has sold great Missouri pork at every Farm Aid concert since 1998.



MRCC members, Maylene Johnston and Joyce Perry, reunite with Shirley Sherrod, from the Federation of Southern Cooperatives in Georgia, and Gary Grant, President of The Black Farmers and Agriculturalist Association.

Shirley and Gary have long histories in the Civil Rights Movement & with MRCC. Shirley helped MRCC leaders, including Joyce and Maylene, create Patchwork Family Farms in 1993. In 1995, Gary joined MRCC members in our fight against Premium Standard Farms at our first rally in Putnam County.

Together, these four farmers represent a history of bringing together farmers from diverse backgrounds and histories and making a real difference.

"But a movement, a Moral Movement that calls people together, not based on what's left and what's right, not based on what is republican and what is democrat, but based on what's right. That talks about what is constitutionally consistent...morally defensible, historically accurate and economically sane. Lifting issues and framing them in that way and helping people to understand our interconnectedness is a way in which we have to move."

--Reverend William J. Barber II, leader of Moral Mondays



MRCC farmer member, Walker Claridge, talks to Phillip Barker about running one of only two black dairy farms in North Carolina.

What is Wrong with the Beef Checkoff!!!

- Missouri cattle farmers are already paying over \$2 million dollars per year in beef checkoff taxes.
- The vast majority of current checkoff dollars ends up in the hands of organizations that lobby to get rid of Country of Origin Labeling (COOL), stop local county control, and favor foreign ownership of Missouri farmland.
- It's a failed program: Since the checkoff's inception, beef consumption has dropped 28%, the U.S. has lost 35,000 cattle feeders & Missouri has lost 40% of our beef producers.
- New proposed checkoffs will mean millions of \$'s per year that farmers could be keeping in their local economies or spending on their farming operations.
- We don't need any more producer taxes for unaccountable government programs that go to support corporate control of the livestock industry!

Rural Lives Matter—Medicaid Expansion May Be Controversial, But It Will Save Rural Lives.

By Rhonda Perry

I'm a 5th generation Missouri family farmer. And like many farmers, I purchased individual insurance in the private market for many years. In rural Missouri the options were limited and expensive. Although I never used the policy, my premiums doubled, and then doubled again. At some point, I could no longer afford to pay for insurance. Eventually, my organization was able to include healthcare coverage for employees. This literally saved my life.

Three years ago I was diagnosed with a very rare and deadly cancer. Even with good insurance, it had taken 3 years to identify and diagnose, which by then was a stage-4 cancer. Without health insurance, it's very unlikely that I would have had access to the necessary specialists and tests that were able to find this hidden disease. After chemo, radiation, surgeries and hospital stays, I am now a cancer survivor.

After living nearly all my life in rural Missouri & now having had the opportunity to spend significant amounts of time in chemo rooms & cancer wards, I saw some important things. People drove hundreds of miles

from rural areas to get treatment. Some traveled over 2 ½ hours every single day for radiation. People who didn't have insurance and couldn't afford specialists & testing that I was able to get, many times found the



*Three MRCC cancer survivors!
Rhonda Perry, Janie Ellerbeck & Monica
Fisher celebrate in Macon.*

diagnosis & treatment was too late. These were some of the bravest people I have known. Through no fault of their own, they weren't able to get the care they needed to save their lives.

These were not lazy people who did not want to work or pay for healthcare. They were rural people who worked hard every day in jobs that didn't pay a lot and provided little or no health insurance, or couples who had small businesses with low profit margins or farmers who couldn't get insurance

because of pre-existing conditions. But they were part of their communities, their families and rural Missouri. Their lives are important.

In rural Missouri, we're pretty independent, but we also watch out for each other in a crisis. We help drive our neighbors to the doctor, we hold fundraisers for their medical bills, we help take care of their cows when they are in the hospital, we take food to their house when they get home and we pray for them. But there are some things that we cannot do for our neighbors no matter how much we would like to. We can't order the CAT scan, or the ultrasound-guided biopsy, or the PET scan, or the MRI. We can't provide the chemo or radiation or other necessary treatments to save their lives. Those things require access to affordable health insurance & healthcare infrastructure in rural communities including hospitals, doctors, nurses & critical care facilities.

Medicaid Expansion is an opportunity for Missouri to create rural healthcare jobs and ensure that we have access to healthcare services that save lives. We can do this because rural lives matter.

What Corporate Ag Doesn't Want YOU to Know about COOL

The multi-national meatpackers, the National Cattlemen's Beef Association (NCBA) and National Pork Producers Council (NPPC) are at it again! They are continuing their all-out attack on Country of Origin Labeling (COOL). Passed in the 2008 Farm Bill, country of origin labeling provides consumers with information about where animals were born, raised and slaughtered.

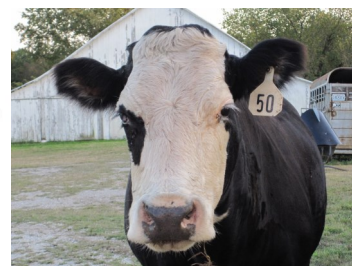
Unfortunately, on Monday, October 20th, the World Trade Organization (WTO) ruled that our COOL guidelines do not adhere to global trade rules, even though our elected representatives passed COOL, which has enormous support from both farmers and consumers. In response, **the United States should fight to protect our democratically elected laws, appeal the ruling and continue to fight for our right to know what country our meat comes from.**

On October 6th, Senator McCaskill and 31 other Senators sent a bi-partisan letter to the Senate Appropriation Chairs in support of COOL, "it is critical that Congress not short-circuit ongoing efforts to support American producers and consumers... Consumers have the right to know where their food comes from, and farmers should be able to market their livestock as born and raised in America."

Call Senators Blunt & McCaskill—Tell them to support Country of Origin Labeling. The U.S. should appeal the WTO COOL Ruling! And, thank Senator McCaskill for her support of COOL.

Senator Blunt: (202) 224-5721

Senator McCaskill: (202) 224-6154



MRCC is Building Big—You Can Help Increase Our Impact

MRCC is prepared to drastically *expand our power* and build a stronger and more engaged base to more fully address the issues that are important to our members.

We are connecting with more Missourians about family farms, the health of our rural communities, good food and *real* democracy.

We have a brand new website (www.morural.org) and database. On our website we will have ways for you, your family and community to take action on key issues and get involved in supporting independent family farms from the local farm to the policy arena.

We are also now on Facebook and Twitter to broadcast far and wide the exciting work that we are doing to lift up rural communities and support family farm agriculture.

WE NEED YOUR HELP!!—We need you to help us spread the word about our new website and Facebook pages. How to spread the good word:

- ✓ Check out our new website at www.morural.org. Let us know what you think. Send us a photo of your farm or your favorite rural scene.
- ✓ Please “like” us on Facebook at [facebook.com/morural](https://www.facebook.com/morural). Share our posts with all of your friends.
- ✓ Follow us on Twitter [@morural](https://twitter.com/morural).



Working to Grow Our Capacity—MRCC and our consultants, Jen & Rebecca.



Find Us on Facebook & Twitter!

MRCC Helps Confront Rural Hunger

Our Food Co-ops Meet the Needs of Hundreds in Rural Missouri

The MRCC Food Co-op is a volunteer-run program that



Jo Mobley, MRCC co-op member and Brant, co-op coordinator talk about new report on rural hunger.

addresses hunger and food security in rural Missouri. Nearly 1,000 families a year receive a monthly delivery from MRCC that includes fresh fruits and vegetables, breads, canned goods and other staples. Members also receive 3-4 lbs. of Patchwork Family Farms pork, providing protein for members and supporting independent family farmers in Missouri. Each month, over 80 volunteers contribute hundreds of hours to make the program run smoothly. Over the last year, the MRCC Food Co-op

has distributed 216,000 lbs. of food to families in rural MO.

Just how important is this program? A recent study has MO as the 2nd worst state for food security among its

citizens. Nearly 17% of Missourians report skipping meals because of lack of money. And Missouri has made it to #1 in the crucial and dubious arena as being the state with the largest number of citizens who have fallen into poverty over the last decade.

MRCC's Food Co-op is critical in meeting the needs of many rural Missouri families. Cheri Heeren, who works with our Sedalia Food Co-op, shared with us some reasons why their members value the Co-op. “[MRCC’s food co-op] provides seniors and families the opportunity to stretch their food dollars. It is important to them to maintain their dignity,” said Heeren. “This way they feel like they are paying an affordable price and getting a generous amount of quality food in return. It provides a ‘hand-up’ [where people need it most]”.

MRCC has co-ops in Chillicothe, Gravois Mills, Ivy Bend, Macon, Moberly, Sedalia and Smithton. To participate in or volunteer for MRCC's Food Co-ops, call Monica at the MRCC office at monica@morural.org or (573) 449-1336.



Food co-ops receive in-season, local produce like these apples from Waverly, MO.

Rural Healthcare Matters!

In many ways, rural Missourians have the most to gain or the most to lose when it comes to getting access to healthcare. Rural families face unique healthcare challenges every day. We have less access to healthcare services and jobs with insurance. And when we do have health insurance, we pay more.

While many farm and rural families are accessing private insurance through the healthcare exchange, other rural families are falling in the healthcare gap.

Although MRCC worked diligently for the last two years pushing for Medicaid Expansion (holding public events, meetings with legislators, telling our members stories, etc.), so far Missouri legislators have refused to implement it. Medicaid Expansion would help thousands of rural Missourians access affordable health insurance, so the next legislative session is critical.

Right now without Medicaid Expansion, rural healthcare services are being cut and rural hospitals are

closing due to our legislature's refusal to expand Medicaid. Check out these troubling developments:



MRCC organizes support for a Medicaid Expansion Resolution at the Columbia, MO City Council Meeting. The Council approved the Resolution.

- Liberty Hospital in Liberty, MO cut 129 positions. Most of these layoffs were nurses.
- The Mercy hospital system cut 300 staff statewide.
- Sac-Osage hospital in Osceola, MO closed in September 2014. The nearest hospital for this community is now 37 miles away.
- Ozarks Medical Center in Mountain Grove, MO cut 32 positions.
- More than \$100 million in investment had been lost because of canceled or delayed capital investment. Thirty-seven hospitals said they are delaying or canceling capital investments, most of which are located in rural areas.

Herb Kuhn, president of the Missouri Hospital Association said: "I think there's a lot of folks in Missouri who would like to think this issue is going to disappear. It's not going to disappear. What [is] disappearing in the state of Missouri is jobs and access to care all across the state, particularly in rural areas,"

Rural hospitals will continue to lay off staff, cut services and even close due to the large financial shortfalls they face without full Medicaid Expansion. This will lead to

slower response times by first responders and longer distances to reach critical care, which could lead to far worse health outcomes and unnecessary deaths for farmers and other rural Missourians.

Right now 700 Missourians are dying every year because they do not have health insurance. These are hardworking, rural Missourians who deserve access to affordable health insurance.

Please join us in the coming year as we continue this important fight. We need your voices to be heard if we are going to have good healthcare, good jobs and healthy communities in rural Missouri.

What Does Corporate Concentration in Livestock Look Like?

The pork industry is a prime example—an industry that in one generation (30 years) has become vertically integrated and controlled by a few corporations. Here's how that effects family farms, consumers and our economy:

- *Two-thirds* of the hog market is controlled by *four* companies, Smithfield, Cargill, JBS/Swift and Tyson, two of which are foreign-owned, JBS/Swift by Brazil and Smithfield by China.
- **Since 1985**, the retail price of pork has *increased* 146% (from \$1.71 to \$4).
- Hog producers share of every retail dollar has *decreased* 31% (from \$.49 to \$.34).
- We have lost 91% of hog farmers in Missouri, and 84% national-wide since 1985.
- In Sept. 1985, Missouri had 2,625,000 market hogs on hand and in Sept. 2014, Missouri had 2,410,000 market hogs on hand—an 8% decrease.

As much as corporate ag supporters would like us to believe that the industrialization of meat production is inevitable, more efficient and results in cheaper food, it simply isn't true. Missouri doesn't market any more hogs than we did 30 years ago, but we do it with less independent producers, higher prices to consumers and more corporate concentration.

We Came, We Saw, We Conquered— MRCC's 2014 Legislative Session

Corporate agriculture lobbyists with their fat checkbooks had planned for a busy year of bad bills that would further advance the industrial agriculture agenda at the expense of independent family farmers and rural communities. **AND WE STOPPED THEM DEAD IN THEIR TRACKS!!**

Together, we were able to stop these bad bills:

- **HB 1728**- this bill attempted to gut the statute that establishes local control of the protections that allow rural communities to keep corporate agriculture from running roughshod in rural Missouri.
- **HB 2094**- this bill attempted to remove transparency and accountability from government agencies.
- **SB 506**- this was an agriculture omnibus bill that included provisions that would further enshrine foreign ownership of Missouri farmland and establish an unnecessary and unpopular beef check-off tax.

This great group effort took place throughout the legislative session and culminated in veto session with our win in upholding

Governor Nixon's veto of SB 506.

This victory was a prime example of farmers and rural citizens triumphing over big corporate agriculture money in our state legislature.

A huge thank you to everyone who called, emailed or went the Capitol to make their voices heard on these critical issues. This victory is yours.

Looking ahead to 2015, our top priorities will be to protect local control from any & all legislative attacks, restoring the allowable amount of foreign ownership of Missouri farmland back to zero percent, improving transparency & government accountability and stopping all attempts to institute a beef check-off tax.

WE NEED YOU! Corporate agriculture lobbyists will be back at it next year trying to advance their agenda at our expense and we need your help to protect family farms, our environment and good food.



Two MRCC leaders, Paul Harter and Lisa Griffith, flyer House offices at the Capitol.

The Missouri Rural Crisis Center

The Missouri Rural Crisis Center is a statewide farm and rural organization founded in 1985 with over 5,600 member families.

Our mission is to preserve family farms, promote stewardship of the land and environmental integrity, and strive for economic and social justice by building unity and mutual understanding among diverse groups, both urban and rural.

MRCC Staff

Roger Allison, Executive Director

Rhonda Perry, Program Director

rhonda@morural.org

Tim Gibbons, Communications Director

tingibbons@morural.org

Brian Smith, Rural Organizer

brian@morural.org

Martha Stevens, Healthcare Organizer

martha@morural.org

Monica Fisher, Office Administrator

monica@morural.org

Kirstin Knutson, Patchwork Coordinator

patchwork@morural.org

Brant Kassel, Food Co-op Coordinator

brant@morural.org

For More information about MRCC activities & events or to get involved in MRCC's policy campaigns go to www.morural.org, "like" us on [Facebook](https://www.facebook.com/morural.org) and follow us on Twitter.

The Missouri Rural Crisis Center

1108 Rangeline Street

Columbia, MO 65201

(573) 449-1336

Celebrate The Holiday Season with Patchwork Family Farms!

"We raise pork the traditional way"

Every time you buy Patchwork products you directly support independent Missouri family farmers!

- ✓ We prohibit the use of artificial growth promotants, and we do not use sub-therapeutic antibiotics.
- ✓ Animals have plenty of access to fresh air and sunshine.
- ✓ Producers use environmental responsibility with their growing practices.

Order Your Holiday Ham & Gift Baskets TODAY!!!

We Can Deliver in the U.S.

Deadline for mail-order is Monday, December 15th or stop by the Patchwork Family Farms office.

Call or Email Us At: (573) 449-1336 or patchwork@morural.org

**Connect with Patchwork Family Farms on our Facebook page.*



MRCC's Board of Directors—Allison Kellenberger, Paul Harter, Steve Hollis, Joyce Perry, Carol Smith, Darvin Bentlage, Jim Compton, Margot McMillen and Julie Fisher. Taken 6/21/14.

Looking for Family Farm Pork? Look No Further—

Visit us at www.morural.org to see a list of restaurants and retailers that serve *Patchwork Family Farms* pork!



The Facts about Factory Farms—

- **CAFO Waste:** CAFO hogs produce up to 4 times the waste of the average person. Missouri's 2.8 million hogs can generate as much untreated waste as 11.2 million people—nearly double the population of the whole state of Missouri. This untreated waste includes viruses, parasites, heavy metals and bacteria, including antibiotic resistant bacteria.
- **Property Rights:** Under current state standards an *unlimited* number of corporate hogs (literally hundreds of thousands) can be located within 3,000 feet from your residence; and waste from CAFOs can be applied 50 feet from your property line. (see *Callaway CAFO Spill* story—page 3)
- **Factory Farms are Targeting the Midwest**—In Missouri, twenty-nine new CAFOs applications have been submitted since June 2013. And in Iowa, over 1,000 CAFOs have built since 2012.
- **Spills Happen**—In 2013-14, there have been 13 documented CAFO spills in MO, in Saline, Audrain, Sullivan, Monroe, Lewis, Vernon & Callaway Counties. Iowa has had 728 documented CAFO spills since 1996, has 630 polluted water ways & Des Moines Water Works spent \$1 million last year to clean up the Des Moines River from CAFO pollution.
- **Foreign-Owned Corporate CAFOs Take Over MO Farmland**—Chinese-owned Smithfield Foods now owns 50,000 acres of MO farmland and is looking to expand.
- **CAFOs make up only ½ of 1% of Missouri's farming operations.** Our elected representatives should be taking steps to protect the property rights of the VAST majority of family farmers and rural landowners, not just the small number of CAFO operators.

For 30 years, MRCC has been supporting Missouri's independent family farmers and rural communities, challenging corporate control and creating sustainable alternatives. Join us in 2015 for many 30th anniversary events and celebrate with us!



In 1986, Roger Allison, MRCC Executive Director, and John Mellencamp join 15,000 people fighting for family farms together in Chillicothe, MO.



In 1996, MRCC members presented 20,000 petition signatures to the legislature demanding local control, clean water and clean air. That year we passed the first ever CAFO standards.



In 2001, MRCC members organized to stop factory farm expansion in Missouri and end the Pork Checkoff—"Save Family Farms", Dump the Pork Tax" & "Stop Factory Farms"!

MRCC Members Take ACTION in 2014!!!

- ♦ Over 17,500 members and supporters "took action" on our farm & food policy campaigns, including making phone calls, sending emails, attending lobby days and meetings, making official comments, signing petitions and much, much more!
- ♦ MRCC's rural Food Co-ops distributed nearly 216,000+ pounds of food to 1,015 rural families with limited resources.
- ♦ MRCC directly communicated with 38,000 *NEW* people on our farm, food, healthcare and environment issues.
- ♦ *Patchwork Family Farms* marketed 171,500 pounds of sustainably raised, family farm pork to individuals, restaurants & grocery stores.
- ♦ 41 *NEW* MRCC leaders played leadership roles in the organization & their communities.
- ♦ MRCC members and our policy positions were featured in over 185 news stories, LTEs, Op-Eds, blogs & radio & TV.



MISSOURI RURAL CRISIS CENTER

1108 Rangeline St. • Columbia, MO 65201 • (573) 449-1336 • FAX: (573) 442-5716

Dear MRCC Supporter,

We've done big things together this year—and we have even bigger things to accomplish in 2015!

We are incredibly grateful that you have been part of our work to make Missouri a better place to live, to farm and to eat.

MRCC has a proven track record of success when we work together—fighting factory farms, protecting local control, creating sustainable alternatives and good food and providing a voice for rural Missourians.

We are proud to have been part of such extraordinary efforts with such committed people who take action every day to protect our farms, food, air, water and communities.

Supporters of corporate agriculture have deep pockets (virtually unlimited amounts of money) to counter all our good work on many fronts. **So, your generous donation will help us become even stronger together**—we have reached out to thousands and thousands of people this year, and we have the opportunity to reach thousands more.

Your contribution will make this possible.

Please make your end-of-the-year donation and renew your membership with MRCC today!

And thank you for your perseverance, passion and inspiration. *We can win when we stand together!*

Sincerely,

Rhonda Perry
Missouri Rural Crisis Center

✂ —————

____ **YES! I will join MRCC to Support Family Farms, Rural Communities & the Environment.**
(I understand annual dues are tax deductible.)

Name(s): _____
Address: _____
City: _____ State: _____ Zip: _____
County: _____ Phone: (____) _____
Email: _____

Check one:

- ☐ Family or Individual \$35/year
- ☐ Contributing Membership \$50/year
- ☐ Supporting Membership \$100/year
- ☐ Sustaining Membership \$250/year
- ☐ Cornerstone Membership \$500/year
- ☐ Foundation Membership \$1,000/year

My interests are (check all that apply):

- ☐ Federal Farm & Food Policy
- ☐ Sustainable Agriculture/Local Food
- ☐ Challenging Factory Farms/Local Control
- ☐ Rural Healthcare
- ☐ Patchwork Family Farms

**Please make checks payable to the Missouri Rural Crisis Center. Questions? Call us at 573.449.1336.
Please return to: The Missouri Rural Crisis Center, 1108 Rangeline Street, Columbia MO 65201.**

**DO YOU WANT TO DO YOUR PART TO SUPPORT FAMILY FARM AGRICULTURE,
AND FIGHT THE CORPORATE TAKEOVER OF OUR FOOD AND FARMS?**

**DO YOU WANT TO SUPPORT OUR RIGHT TO KNOW WHERE OUR FOOD COMES
FROM?**

**DO YOU WANT TO ENSURE AFFORDABLE AND ADEQUATE HEALTHCARE FOR
MISSOURI'S FARM FAMILIES AND ALL MISSOURIANS?**

**DO YOU WANT TO STOP THE PROLIFERATION OF CORPORATE FACTORY FARMS &
PROTECT OUR ENVIRONMENT IN MISSOURI?**

*If you answered YES to any of these questions, please join the
Missouri Rural Crisis Center in the fight for family farms,
property rights, good food and REAL democracy!!!*

To Take Action on the Issues YOU Care About, Sign Up for MRCC's Action Alert List!

Go to our new website at www.morural.org!!!

We need YOU to help impact farm and food policy in Missouri!!!

MISSOURI RURAL CRISIS CENTER
1108 RANGELINE STREET
COLUMBIA, MO 65201

